

CLEAN AND QUIET SURVEILLANCE

A GREEN SOLUTION TO PORTABLE SURVEILLANCE

Ensol System designs and builds innovative solutions to energy problems using clean energy sources.

Ensol's Hybrid Video Trailer is designed for applications where recharging and refueling is a challenge. We provide easy monitoring and control via cellular or WiFi networks.

With a tamper resistant housing mounted on a compact trailer, Ensol's surveillance system is a rapid deployment security system.

Utilizing a Hybrid power system of solar energy and methanol fuel cells, the video trailer generates clean power with less CO2 emissions than the average person exhales.

SPECIFICATIONS

4320 Watt-hrs./day Fuel Cell Power

480 Watts of Solar Power

360° Continuous Monitoring Pan

Wide Body Rugged Design

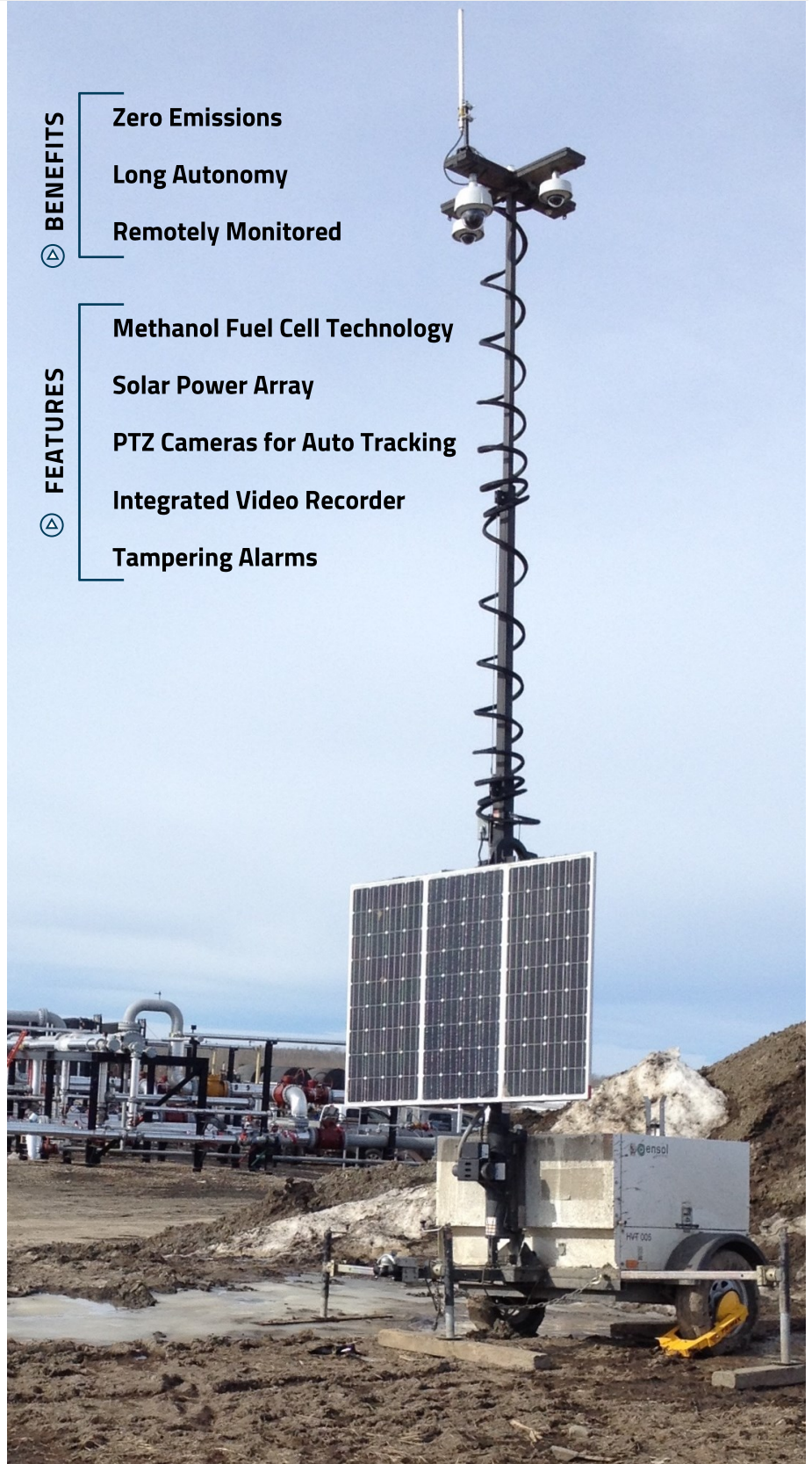
30 Foot Mast with Electric Winches

BENEFITS

- Zero Emissions**
- Long Autonomy**
- Remotely Monitored**

FEATURES

- Methanol Fuel Cell Technology**
- Solar Power Array**
- PTZ Cameras for Auto Tracking**
- Integrated Video Recorder**
- Tampering Alarms**



TRAILER

| | |
|--------------------------------|--|
| Mast Stowed Dimension LxWxH | 4.32 x 1.98x 1.83 meter (170 x 78 x 72 in) |
| Maximum Height of Mast | 9 m (30ft) |
| Width with Outriggers Extended | 3.84 m (151 in) |
| Weight | 950 kg (2100 lbs) |
| Axle | 3500 lb (1588 kg) leaf spring axle |
| Hitch | Combo - 2" ball hitch & 2.5" pintle ring |
| Jacks | Four, 2000 lb adjustable leveling jacks |
| Tires | ST205/75R15 - 6 ply (15 in) |
| Lighting | DOT approved tail, side, brake & signal lights |
| Enclosure | 14 gauge steel, polyester powder paint, SST hardware |

POWER SYSTEM

| | |
|------------------------------|----------------------------------|
| Fuel Cell | 2 x Direct Methanol Fuel Cells |
| Total Fuel Cell Power Output | 180 Watt (4,320Watt-hrs/day) |
| Solar Panels (x3) | 160 Watt |
| Solar Power Total | 480 Watts |
| Solar Charge Controller | Morningstar 30Amp |
| Battery (x4) | Power Sonic AGM Model PSG-121000 |
| Battery Spec | 12VDC 100Ahr |

VIDEO SYSTEM OPTIONS

| | |
|---------------------------|---|
| Camera Types Supported | All Digital IP Cameras: Fixed, PTZ, Thermal, 360° |
| Optical Zoom | Up to 36x (read a license plate from 1000' away) |
| Mast Top Lighting Options | LED, Infrared Illuminators, Strobe |
| Audio | 2-Way (via optional microphone and loudspeaker) |
| Cellular | LTE 4G with Auto Failover to 3G |
| Wireless | Local Hotspot 802.11 b/g/n |
| Radio / PTP | Wireless Radio / Point to Point / Point to Multipoint |
| NVR Hardware | Acura Embedded PowerBrick |
| NVR Software | Compatible with Most |
| Voltage | 12/24/48 or 120V AC Via Inverter |
| Operating Temperature | -40°C to +50°C |

HYBRID WITH SOLAR



FUEL CELL POWER

